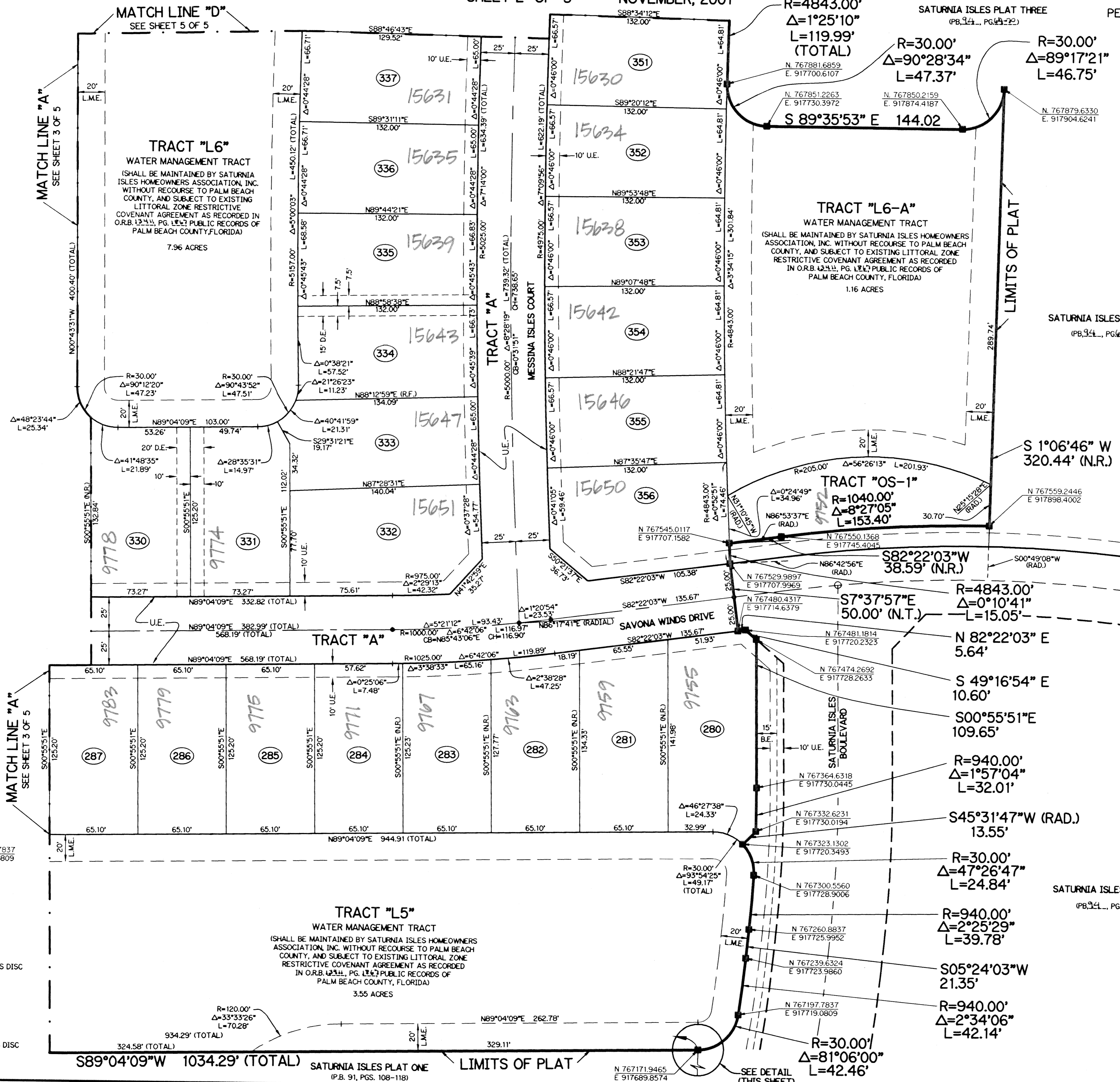
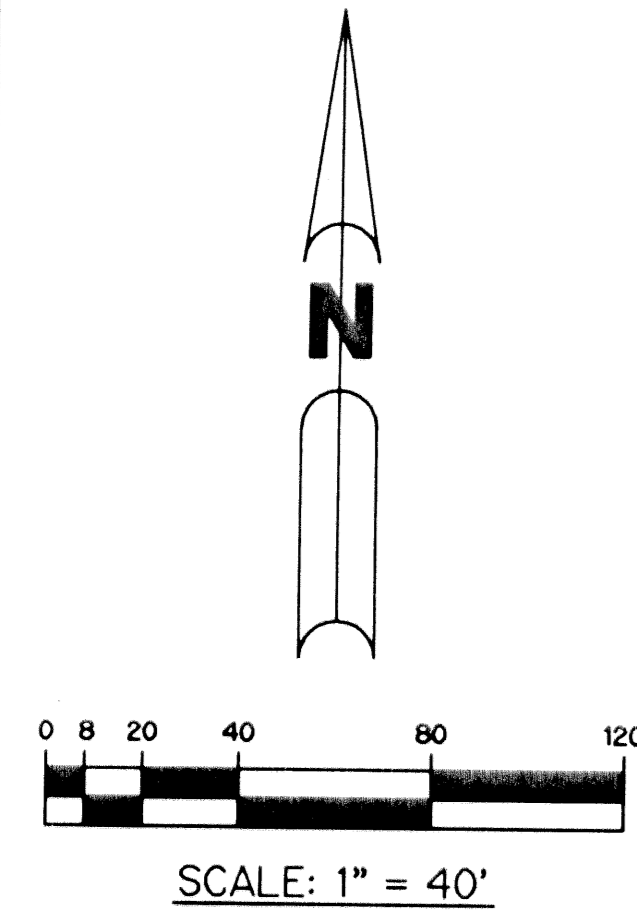


SATURNIA ISLES - PLAT FOUR

BEING A REPLAT OF A PORTION OF TRACT 85, SECTION 19, PALM BEACH FARMS COMPANY PLAT NO. 1 ACCORDING TO THE PLAT THEREOF, RECORDED IN PLAT BOOK 2, PAGE 26 TOGETHER WITH A PORTION OF BLOCKS 1 THROUGH 12, MILLER'S PARK, ACCORDING TO THE PLAT THEREOF, RECORDED IN PLAT BOOK 4, PAGE 69 TOGETHER WITH A PORTION OF BLOCKS 1 AND 6, MILLER'S PARK UNIT 2, ACCORDING TO THE PLAT THEREOF, RECORDED IN PLAT BOOK 4, PAGE 75 TOGETHER WITH ALL ABANDONED RIGHTS OF WAY AS PER OFFICIAL RECORDS BOOK 12389, PAGE 1259, ALL OF THE PUBLIC RECORDS OF PALM BEACH COUNTY, FLORIDA, LYING IN SECTION 19, TOWNSHIP 46 SOUTH, RANGE 42 EAST.

SHEET 2 OF 5 NOVEMBER, 2001

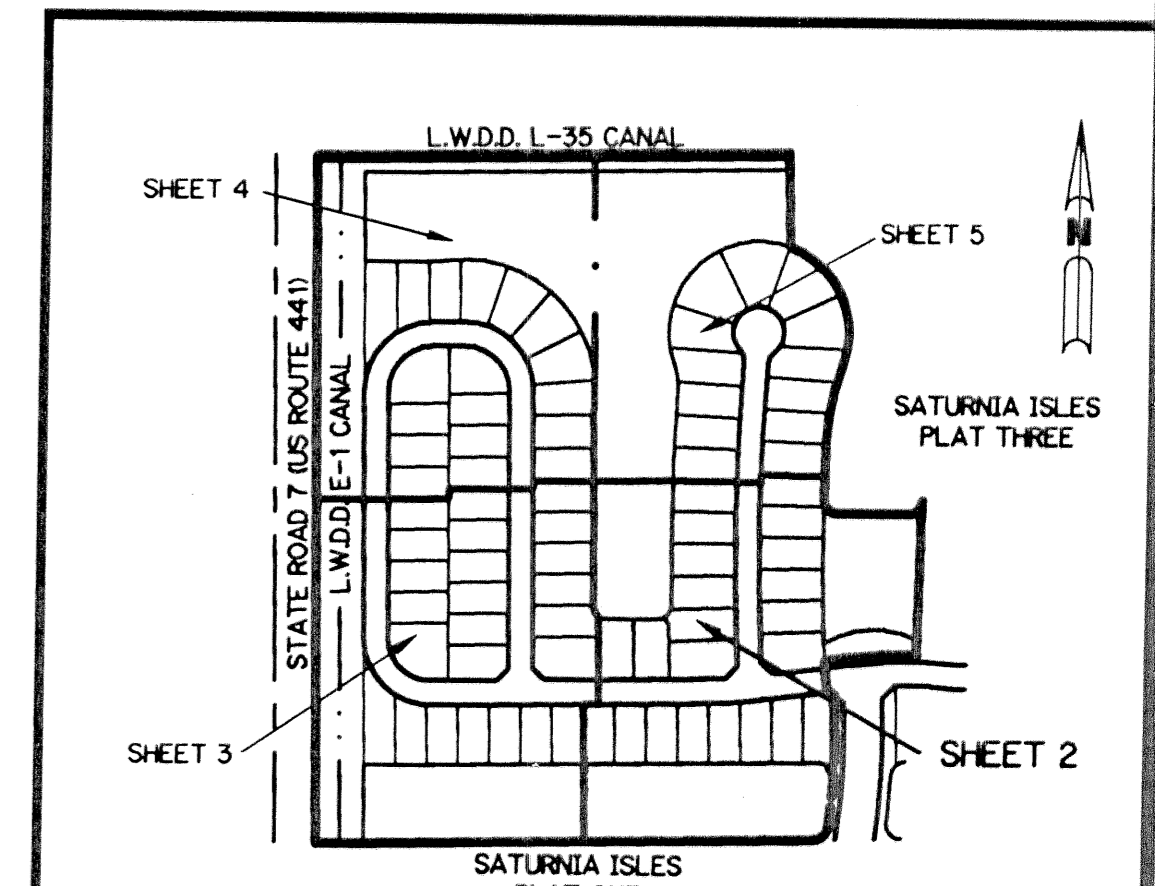
THIS INSTRUMENT PREPARED BY
 PERRY C. WHITE, P.S.M. 4213, STATE OF FLORIDA
 LAWSON, NOBLE AND WEBB, INC.
 ENGINEERS PLANNERS SURVEYORS
 420 COLUMBIA DRIVE
 WEST PALM BEACH, FLORIDA 33409
 LB-6674



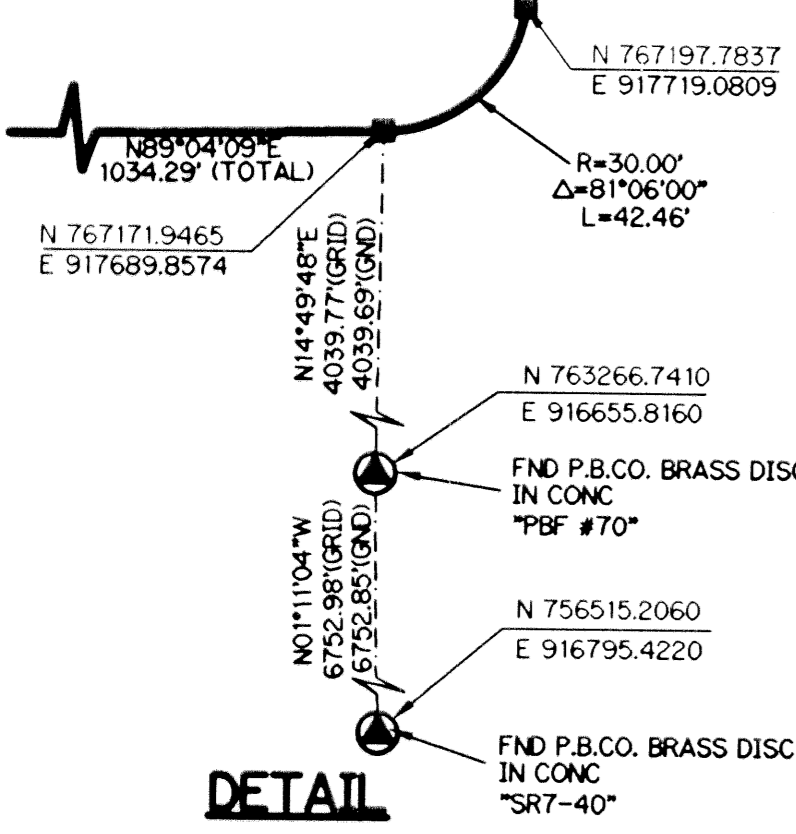
- LEGEND:**
- - SET PERMANENT REFERENCE MONUMENT, L.B. #6674
 - - FOUND PERMANENT REFERENCE MONUMENT, L.B. #6674
 - - SET PERMANENT CONTROL POINT, L.B. #6674
 - - FOUND PERMANENT CONTROL POINT, L.B. #6674
 - Δ - DELTA ANGLE
 - B.E. - BUFFER EASEMENT
 - CB - CHORD BEARING
 - CH - CHORD DISTANCE
 - ⊕ - CENTERLINE
 - D.B. - DEED BOOK
 - D.E. - DRAINAGE EASEMENT
 - L - ARC LENGTH
 - L.A.E. - LIMITED ACCESS EASEMENT
 - L.M.A.E. - LAKE MAINTENANCE ACCESS EASEMENT
 - L.M.E. - LAKE MAINTENANCE EASEMENT
 - L.W.D. - LAKE WORTH DRAINAGE DISTRICT
 - N.R. - NOT RADIAL
 - N.T.S. - NOT TO SCALE
 - O.R.B. - OFFICIAL RECORD BOOK
 - P.B. - PLAT BOOK
 - P.S. - PAGES
 - P.S.M. - PROFESSIONAL SURVEYOR AND MAPPER
 - R - RADIUS
 - RAD. - RADIAL
 - R.F. - RADIAL TO FRONT
 - N.T. - NON-TANGENT
 - R/W - RIGHT-OF-WAY
 - S.T. - SURVEY TIE
 - U.E. - UTILITY EASEMENT
 - P.B.F.C. - PALM BEACH FARMS COMPANY PLAT NO. 1 (P.B. 2, PGS. 26 - 28)
 - - DENOTES TRACT NUMBER PER PALM BEACH FARMS COMPANY PLAT NO. 1 (P.B. 2, PG. 26)
 - N 737648.0171
E 905258.2326 - DENOTES STATE PLANE COORDINATES

NOTE:
 COORDINATES SHOWN ARE GRID COORDINATES
 DATUM = NAD 83 (1990 ADJUSTMENT)
 ZONE = FLORIDA EAST ZONE
 LINEAR UNIT = U.S. SURVEY FEET
 COORDINATE SYSTEM = 1983 STATE PLANE TRANSVERSE MERCATOR PROJECTION
 ALL DISTANCES ARE GROUND
 SCALE FACTOR = 1.0000190
 PLAT BEARING = GRID BEARING
 NO ROTATION

KEY MAP



SUBDIVISION SATURNIA ISLES - PLAT 4
 BOOK 94 PAGE 112
 FLOOD ZONE B FLOOD MAP # 2154
 SE ZONING AIR
 QUAD # 52
 SE ZIP CODE 33446
 TAZ # 701
 PUD NAME SUSSMAN AGR



DETAIL